

**BALDOR • RELIANCE**

---

# Customer information packet

## L3609TM

3HP, 1725RPM, 1PH, 60HZ, 184T, 3634LC, TEFC, F1

Class - None

Division - Not Applicable

## Specifications

Enclosure	TEFC
Frame	184T
Frame Material	Steel
Frequency	60.00 Hz
Motor Letter Type	Cap Start, Cap Run
Output @ Frequency	3.000 HP @ 60 HZ
Phase	1
Synchronous Speed @ Frequency	1800 RPM @ 60 HZ
Voltage @ Frequency	115.0 V @ 60 HZ 230.0 V @ 60 HZ
XP Class and Group	None
XP Division	Not Applicable
Agency Approvals	UR CSA
Ambient Temperature	40 °C
Auxillary Box	No Auxillary Box
Auxillary Box Lead Termination	None
Base Indicator	Rigid
Bearing Grease Type	Polyrex EM (-20F +300F)
Blower	None
Current @ Voltage	14.500 A @ 230.0 V 28.000 A @ 115.0 V
Design Code	L
Drip Cover	No Drip Cover
Duty Rating	CONT
Efficiency @ 100% Load	78.0 %
Electrically Isolated Bearing	Not Electrically Isolated
Feedback Device	NO FEEDBACK
Front Face Code	Standard
Front Shaft Indicator	None
Heater Indicator	No Heater
High Voltage Full Load Amps	14.5 a

## Part detail

Revision	AJ
Type	AC
Mech. spec.	36F227
Base	
Status	PRD/A
Elec. spec.	36WGY155
Layout	36LYF227
Eff. date	05-09-2024
CD Diagram	CD0320
Poles	04
Leads	4#14 A PH,2#16 B PH,1#10 #4TH
Proprietary	False
Created date	01-01-0001

<b>Insulation Class</b>	F
<b>Inverter Code</b>	Not Inverter
<b>KVA Code</b>	K
<b>Lifting Lugs</b>	No Lifting Lugs
<b>Locked Bearing Indicator</b>	No Locked Bearing
<b>Motor Lead Exit</b>	Ko Box
<b>Motor Lead Quantity/Wire Size</b>	4 @ 14 AWG, A PH
<b>Motor Lead Termination</b>	Flying Leads
<b>Motor Standards</b>	NEMA
<b>Motor Type</b>	3634LC
<b>Mounting Arrangement</b>	F1
<b>Number of Poles</b>	4
<b>Overall Length</b>	16.54 IN
<b>Power Factor</b>	85
<b>Product Family</b>	General Purpose
<b>Pulley End Bearing Type</b>	Ball
<b>Pulley Face Code</b>	Standard
<b>Pulley Shaft Indicator</b>	Standard
<b>Rodent Screen</b>	None
<b>Service Factor</b>	1.00
<b>Shaft Diameter</b>	1.125 IN
<b>Shaft Extension Location</b>	Pulley End
<b>Shaft Ground Indicator</b>	No Shaft Grounding
<b>Shaft Rotation</b>	Reversible
<b>Shaft Slinger Indicator</b>	No Slinger
<b>Speed</b>	1725 rpm
<b>Speed Code</b>	Single Speed
<b>Starting Method</b>	Direct on line
<b>Thermal Device - Bearing</b>	None
<b>Thermal Device - Winding</b>	Do Not Use
<b>Vibration Sensor Indicator</b>	No Vibration Sensor
<b>Winding Thermal 1</b>	Manual Thermal Overload
<b>Winding Thermal 1 Location</b>	KO
<b>Winding Thermal 2</b>	None

**Nameplate**

<b>NP1257L</b>									
<b>CAT.NO.</b>	L3609TM								
<b>SPEC.</b>	36F227Y155								
<b>HP</b>	3								
<b>VOLTS</b>	115/230								
<b>AMP</b>	28/14.5								
<b>RPM</b>	1725								
<b>FRAME</b>	184T			<b>HZ</b>	60		<b>PH</b>	1	
<b>SER.F.</b>	1.00	<b>CODE</b>	K	<b>DES</b>	L	<b>CL</b>	F		
<b>NEMA-NOM-EFF</b>	78	<b>PF</b>	85						
<b>RATING</b>	40C AMB-CONT								
<b>CC</b>									
<b>DE</b>	6206	<b>ODE</b>	6205						
<b>ENCL</b>	TEFC	<b>SN</b>							

**Accessories**

<b>Part number</b>	<b>Description</b>	<b>Multiplier</b>
36-3301	C FACE KIT	A8
36EP1304A62SP	FLANGE MTD ENDPLATE 182-4TD -ENCL (LESS	A8

**AC Induction Motor Performance Data**

Record # 11212

Typical performance - not guaranteed values

Winding: 36WGY155-R001		Type: 3634LC	Enclosure: TEFC	
<b>Nameplate Data</b>			<b>230 V, 60 Hz: High Voltage Connection</b>	
Rated Output (HP)	3	Full Load Torque	9 LB-FT	
Volts	115/230	Start Configuration	direct on line	
Full Load Amps	28/14.5	Breakdown Torque	23 LB-FT	
R.P.M.	1725	Pull-up Torque	18 LB-FT	
Hz	60 Phase	Locked-rotor Torque	29 LB-FT	
NEMA Design Code	L KVA Code	Starting Current	105 A	
Service Factor (S.F.)	1	No-load Current	6.35 A	
NEMA Nom. Eff.	78 Power Factor	Line-line Res. @ 25°C	0.688 Ω A Ph 0.628 Ω B Ph	
Rating - Duty	40C AMB-CONT	Temp. Rise @ Rated Load	96°C	

**Load Characteristics 230 V, 60 Hz, 3 HP**

% of Rated Load	25	50	75	100	125	150
Power Factor	53	71	81	86	88	89
Efficiency	63.3	76.2	80.4	81.4	80.7	78.8
Speed	1787	1775	1762	1747	1730	1709
Line amperes	7.25	9	11.3	14	17.1	20.8

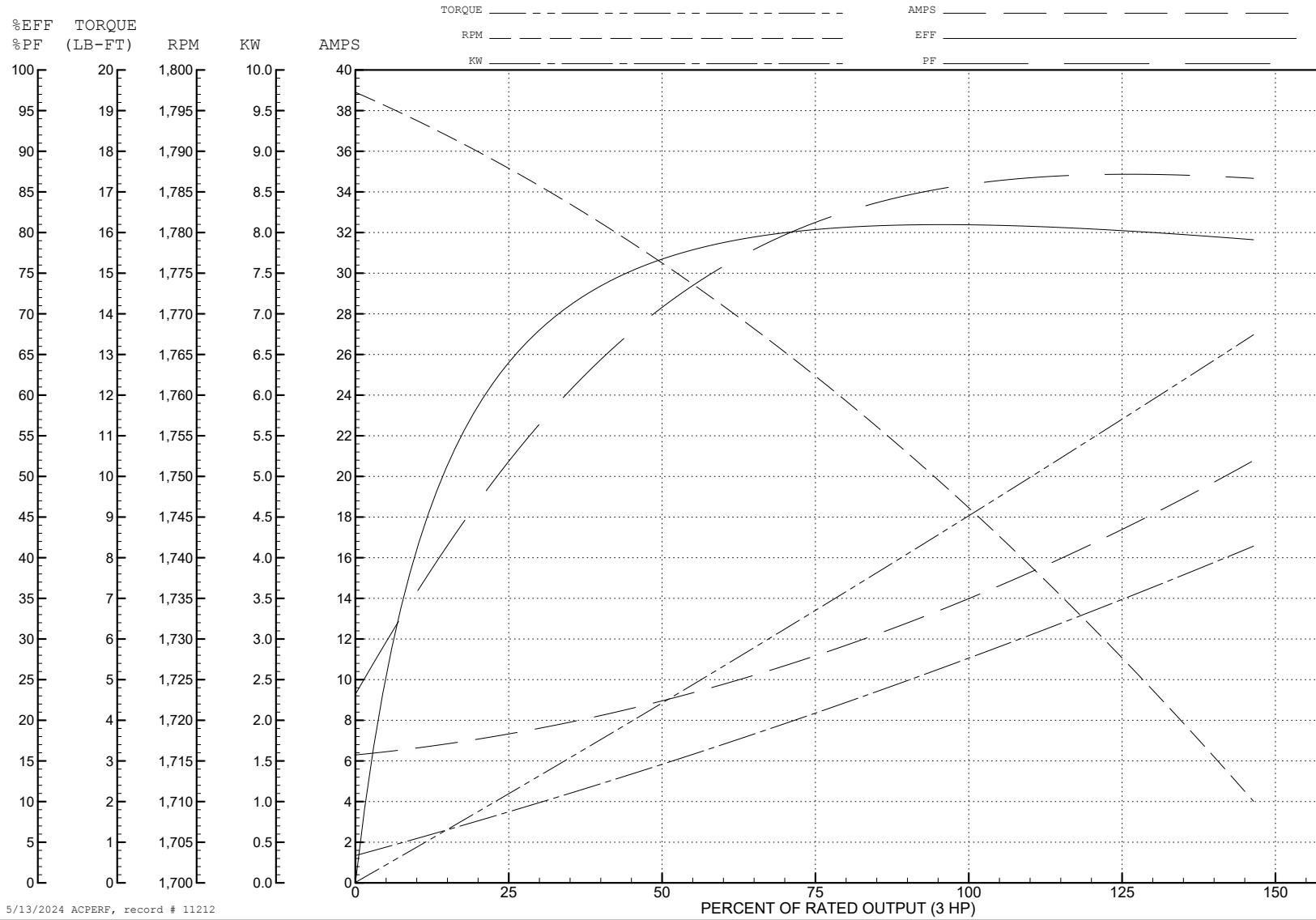
ABB Motors and Mechanical Inc.

WINDING # 36WGY155

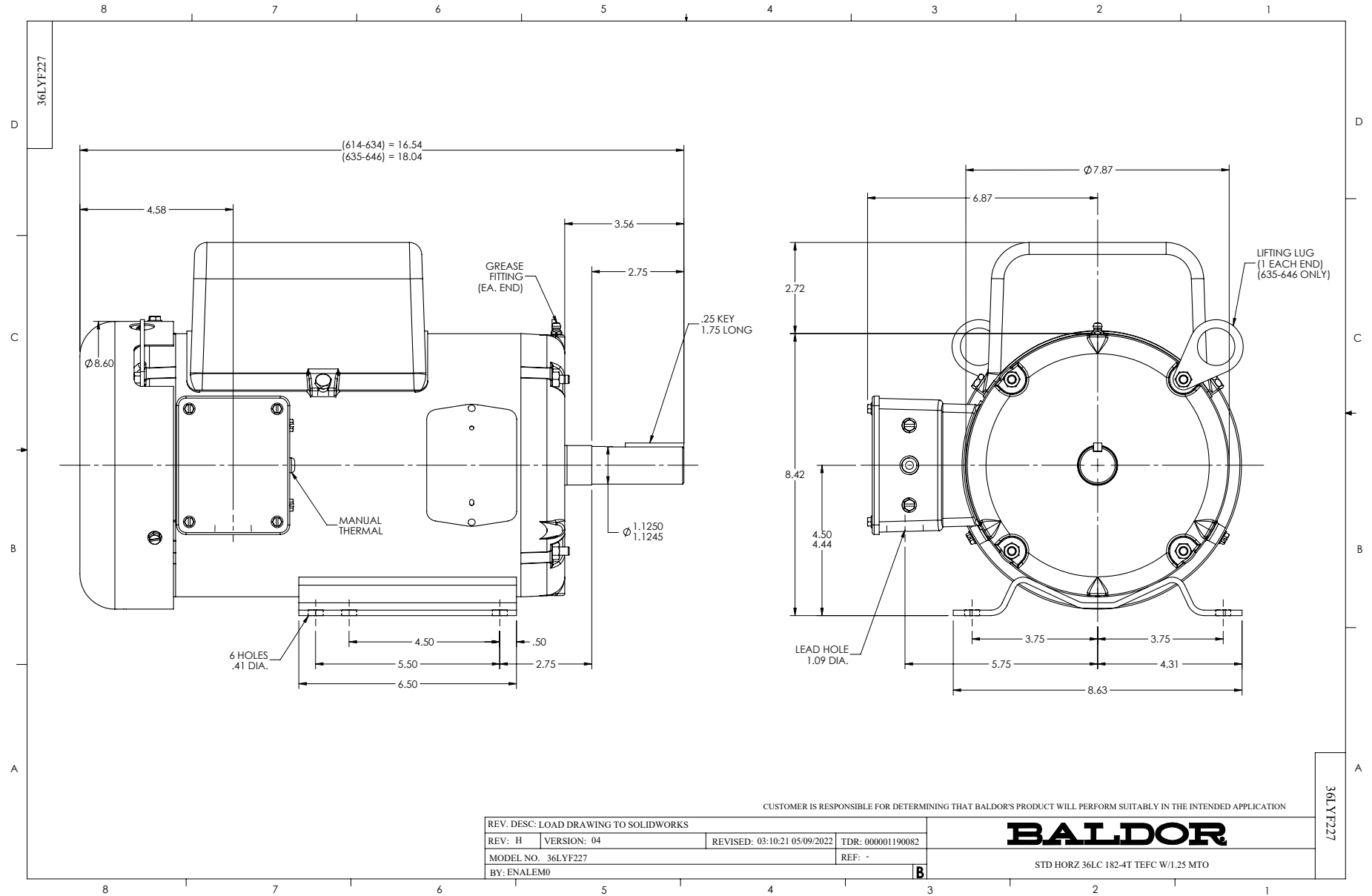
Typical performance - not guaranteed values.

3 HP 1 PH 60 HZ 1725 RPM 230 V 3634LC

TORQUES (LB-FT): PO=23 PU=18 LR=29 LRA=105



5/13/2024 ACPERF, record # 11212



CUSTOMER IS RESPONSIBLE FOR DETERMINING THAT BALDOR'S PRODUCT WILL PERFORM SUITABLY IN THE INTENDED APPLICATION

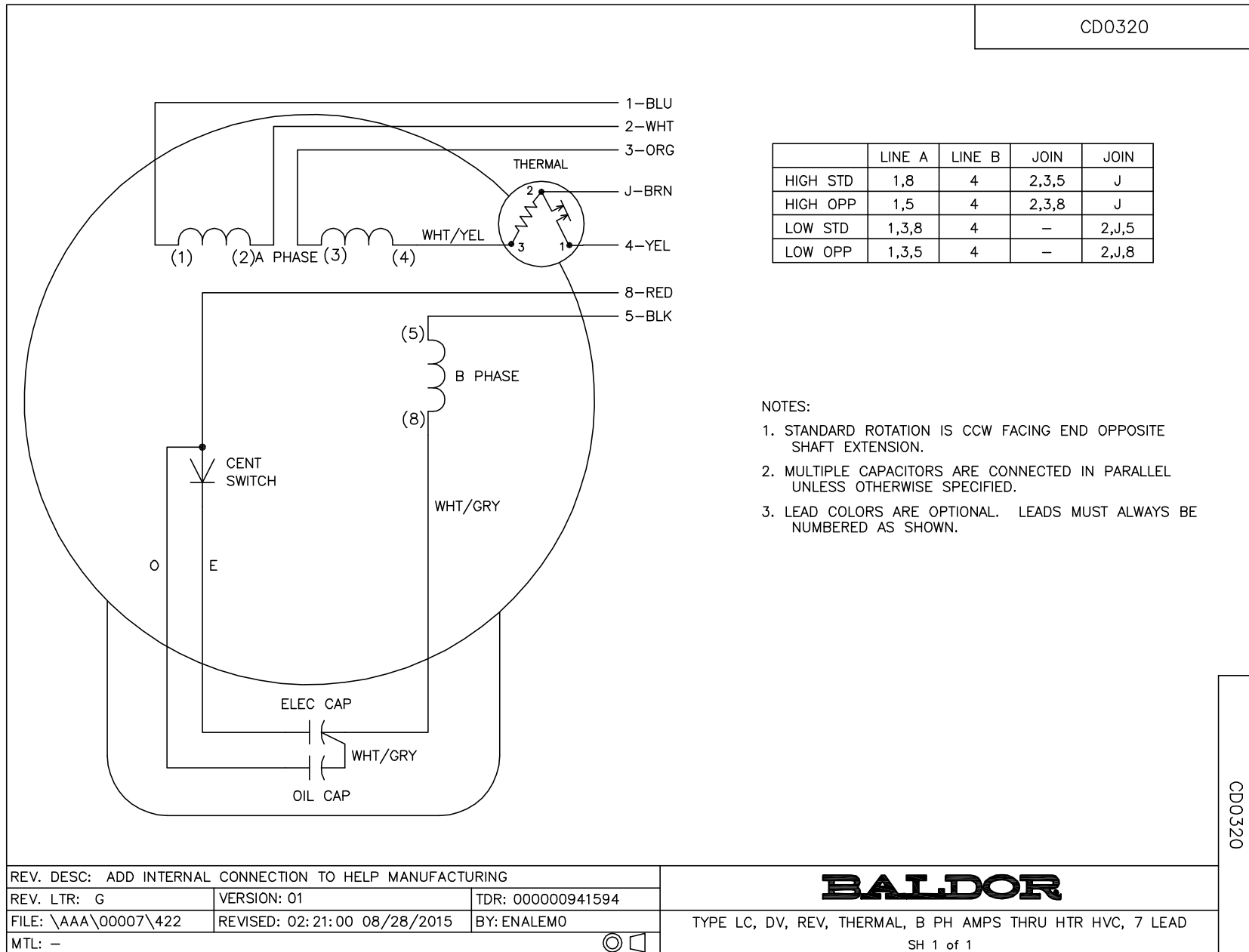
REV. DESC: LOAD DRAWING TO SOLIDWORKS			
REV: H	VERSION: 04	REVISED: 03:10:21 05/09/2022	TDR: 000001190082
MODEL NO. 36LYF227		REF: -	
BY: ENALEM0			

**BALDOR**

STD HORZ 36LC 182-4T TEFC W/1.25 MTO



CD0320



	LINE A	LINE B	JOIN	JOIN
HIGH STD	1,8	4	2,3,5	J
HIGH OPP	1,5	4	2,3,8	J
LOW STD	1,3,8	4	-	2,J,5
LOW OPP	1,3,5	4	-	2,J,8

NOTES:

1. STANDARD ROTATION IS CCW FACING END OPPOSITE SHAFT EXTENSION.
2. MULTIPLE CAPACITORS ARE CONNECTED IN PARALLEL UNLESS OTHERWISE SPECIFIED.
3. LEAD COLORS ARE OPTIONAL. LEADS MUST ALWAYS BE NUMBERED AS SHOWN.

CD0320

REV. DESC: ADD INTERNAL CONNECTION TO HELP MANUFACTURING		
REV. LTR: G	VERSION: 01	TDR: 00000941594
FILE: \AAA\00007\422	REVISED: 02:21:00 08/28/2015	BY: ENALEMO
MTL: -		© □

**BALDOR**

TYPE LC, DV, REV, THERMAL, B PH AMPS THRU HTR HVC, 7 LEAD  
SH 1 of 1